



# GMT MONTHLY MEMBERSHIP PROGRESS REPORT

Results as of: 2/29/2020

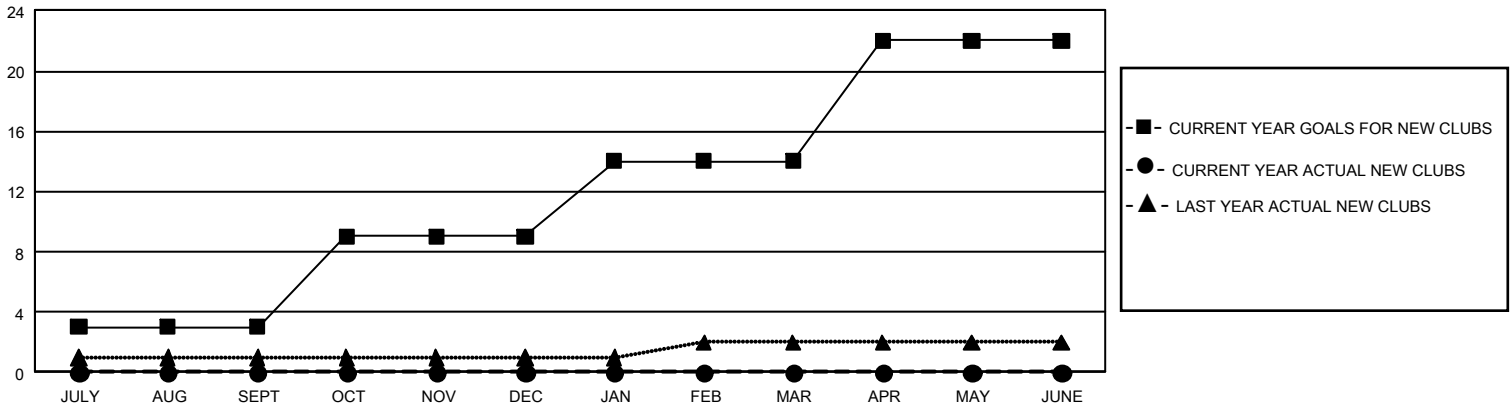
## GMT Constitutional Area 1, Group H

GMT: OPEN

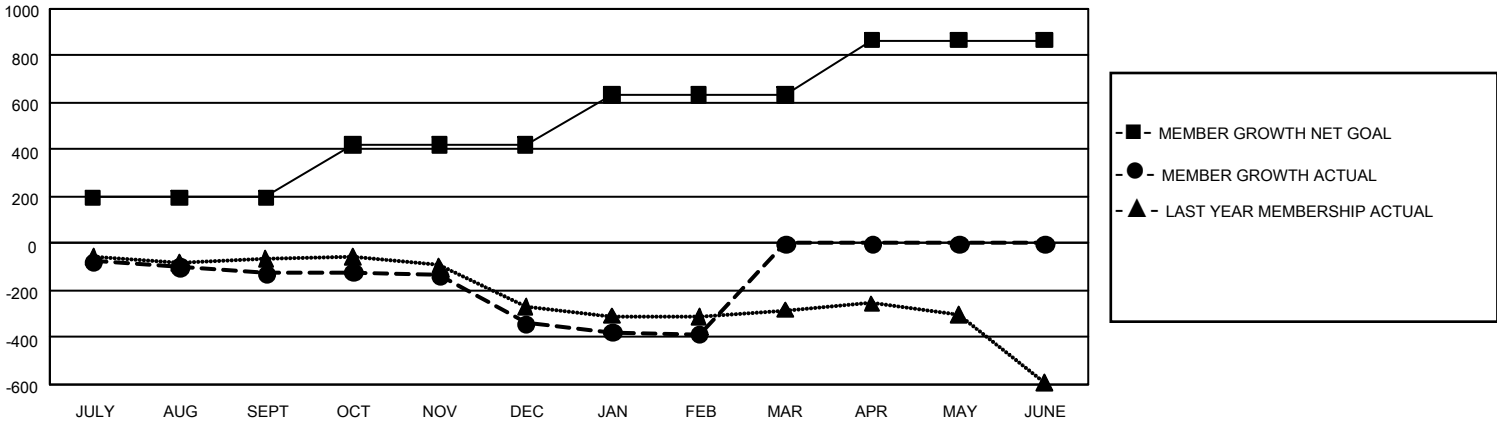
REPORT DOES NOT INCLUDE CLUBS IN UNDISTRICTED AREAS.

Clubs				Members			
RESULTS FOR 2019-2020				RESULTS FOR 2019-2020			
QUARTER	NEW CLUB GOAL	NEW CLUBS	DROPPED CLUBS	QUARTER	MEMBER GROWTH NET GOAL	MEMBER GROWTH ACTUAL	DROPPED MEMBERS ACTUAL (including transfers)
JULY/AUG/SEPT	9	0	3	JULY/AUG/SEPT	588	256	320
OCT/NOV/DEC	18	0	6	OCT/NOV/DEC	669	228	420
JAN/FEB/MAR	15	0	2	JAN/FEB/MAR	648	205	224
APR/MAY/JUNE	24	0	0	APR/MAY/JUNE	693	0	0

**GOALS AND ACTUAL NEW CLUBS CUMULATIVE**



**GOALS AND ACTUAL MEMBERS CUMULATIVE**



<b>DROPPED CLUBS: 11</b>	207 CLUBS OF 416 ADDED 1 OR MORE NEW MEMBERS	<b><u>GENDER DISTRIBUTION</u></b> MALE            6,379 (62.93%) FEMALE         3,758 (37.07%)
<b><u>DROPPED MEMBERS</u></b> DECEASED            110 CLUB CANCELLED      18 OTHER                 835 <hr/> TOTAL                 963	<a href="#">CLICK HERE FOR CUMULATIVE MEMBERSHIP DATA</a>	TOTAL FAMILY UNIT MEMBERS            2,520  FAMILY MEMBERS PAYING HALF DUES      1,294